



Business Objects in Public Health (and beyond)

October 29, 2009

Alex Kriegel

What's in a name...

- Reporting
- Business Intelligence Analysis
- Dashboards and Visualization
- Integrated Enterprise Solution

Reporting

- Canned: ***Crystal Reports*** software enables to design interactive reports (on-report sorting and filtering) and connect them to virtually any data source.
- Ad-Hoc: ***Web Intelligence*** - self-service access to data and intuitive information analysis
- ***Universe Designer***: data abstraction/federation feature

Canned Reports

Home Foods Noncompliance Records

Start Date: Thursday, January 1, 2004 End Date: Saturday, July 31, 2004

RELATE	ISS	ISSA	ISSB	STATUS	RESPONSE	ACTUAL	REP CODE	ISSA.CAT	ISSB.CLASS
EAST COAST									
010204	EC	2004-001	1-2004-001	REJECTED	WORKING		ESABT	PRODUCT	MISBRAND#IG

Home Foods Noncompliance Records By Fiscal Period

Fiscal Year: 2004 Fiscal Period: 07

Facility	2004-01	2004-02	2004-03	2004-04	2004-05	2004-06	2004-07	2004-08	2004-09	2004-10	2004-11	2004-12	2004-Total	2003-01	2003-Total
EAST COAST	6	5	0	0	5	2	7	0	0	0	0	0	33	0	32
MIDWEST	0	0	0	0	0	0	0	0	0	0	0	0	0	0	0
WEST COAST	7	0	0	0	0	0	0	0	0	0	0	0	0	0	0
ALL FACILITIES	23	5	0	0	5	2	7	0	0	0	0	0	33	0	32

Home Foods Unresolved Incidents

Start Date: Thursday, January 1, 2004 End Date: Friday, December 31, 2004

RELATE	ISS	ISSA	ISSB	STATUS	RESPONSE	ACTUAL	REP CODE	ISSA.CAT	ISSB.CLASS
EAST COAST									
010204	EC	2004-001	1-2004-001	ACTIVE	REJECTED	WORKING	ESABT	PRODUCT	MISBRAND#IG

Home Foods Top 5 NR Reasons

Facility: <All>
Starting Period: 2004-01 Ending Period: 2004-12

Home Foods Noncompliance Records Summary

Start Date: Thursday, January 1, 2004 Stop Date: Friday, December 31, 2004

EAST COAST									
NR Status	Appeal Level		Appeal Status		Appeal Statistics				
Closed	3	Level	4	Approved	3		OTDRS	CF Appeals	
Reopened	2	Class	1	Rejected	0	Approved:	27.9%		
Active	11	DMKCI	0	Working	1	Approved:	10.7%	90.0%	
Response	1	Nat Regulatory	0	Disputed	1	Rejected:	11.1%	40.0%	
Appealed	1	Nat Field	0	Review	0	Modified:	5.6%	20.0%	
Total NRs	18	Total Appeals	5	Total Appeals	5				
Incidents									
Total Incidents:	18	Reopened:	3	16.7%					
Incident/NR:	1.00	Revised:	1	5.3%					

MIDWEST									
NR Status	Appeal Level		Appeal Status		Appeal Statistics				
Closed	1	Level	0	Approved	0		OTDRS	CF Appeals	
Reopened	0	Class	1	Rejected	0	Approved:	0.0%		
Active	4	DMKCI	1	Working	1	Approved:	0.0%	0.0%	
Response	3	Nat Regulatory	0	Disputed	1	Rejected:	0.0%	0.0%	
Appealed	1	Nat Field	1	Review	1	Modified:	0.0%	0.0%	
Total NRs	9	Total Appeals	2	Total Appeals	2				
Incidents									
Total Incidents:	9	Reopened:	0	0.0%					
Incident/NR:	1.00	Revised:	0	0.0%					

Reason	Count
DRESS	1
RECORDS INCOMPLETE	1
Others	1

Crystal Reports vs. Business Objects

- **Crystal Reports** – compiled, parameterized executable *reports*
- **Business Objects** – Web based deployment *framework* for Crystal Reports (among other things) providing scheduling, auditing, caching, distribution automation and more

Business Analysis

- SAP BusinessObjects offers software that supports ***query generation*** and ***integrated analysis***, as well as basic report authoring and ***information-sharing*** over intranets and extranets.
- SAP BusinessObjects ***advanced analytic tools*** are designed for financial and business analysts. These tools interrogate complex historical data to look for ***trends, outliers, and patterns*** through a visual interface.

What-If Scenarios...



Dashboards and Visualization

- ***SAP BusinessObjects Xcelsius Enterprise*** is a data visualization product that provides a simple, personalized view of an organization's data to enable better understanding, insightful decision-making, and scenario evaluation.
- Browser based and/or Desktop widgets

In a Browser...

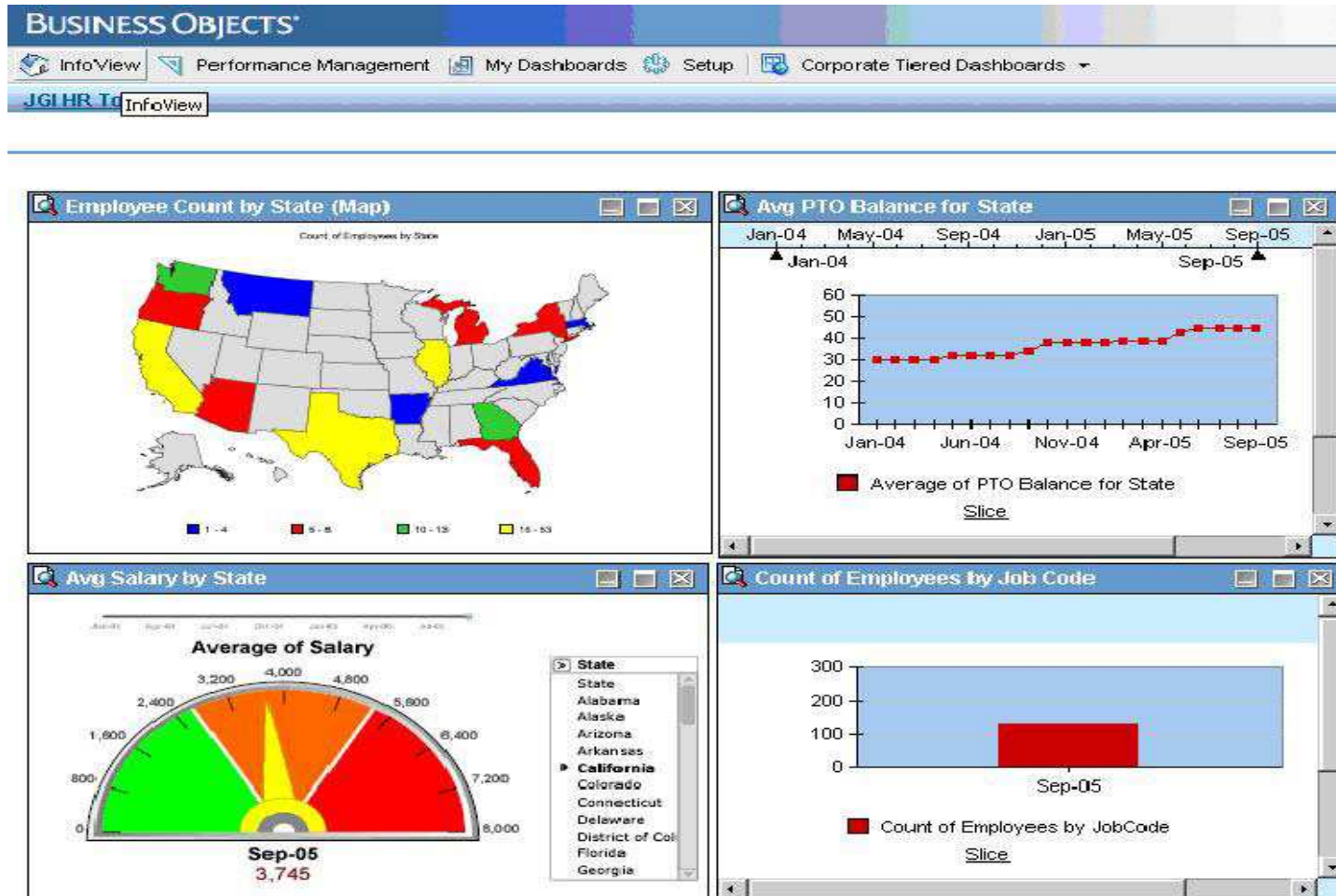
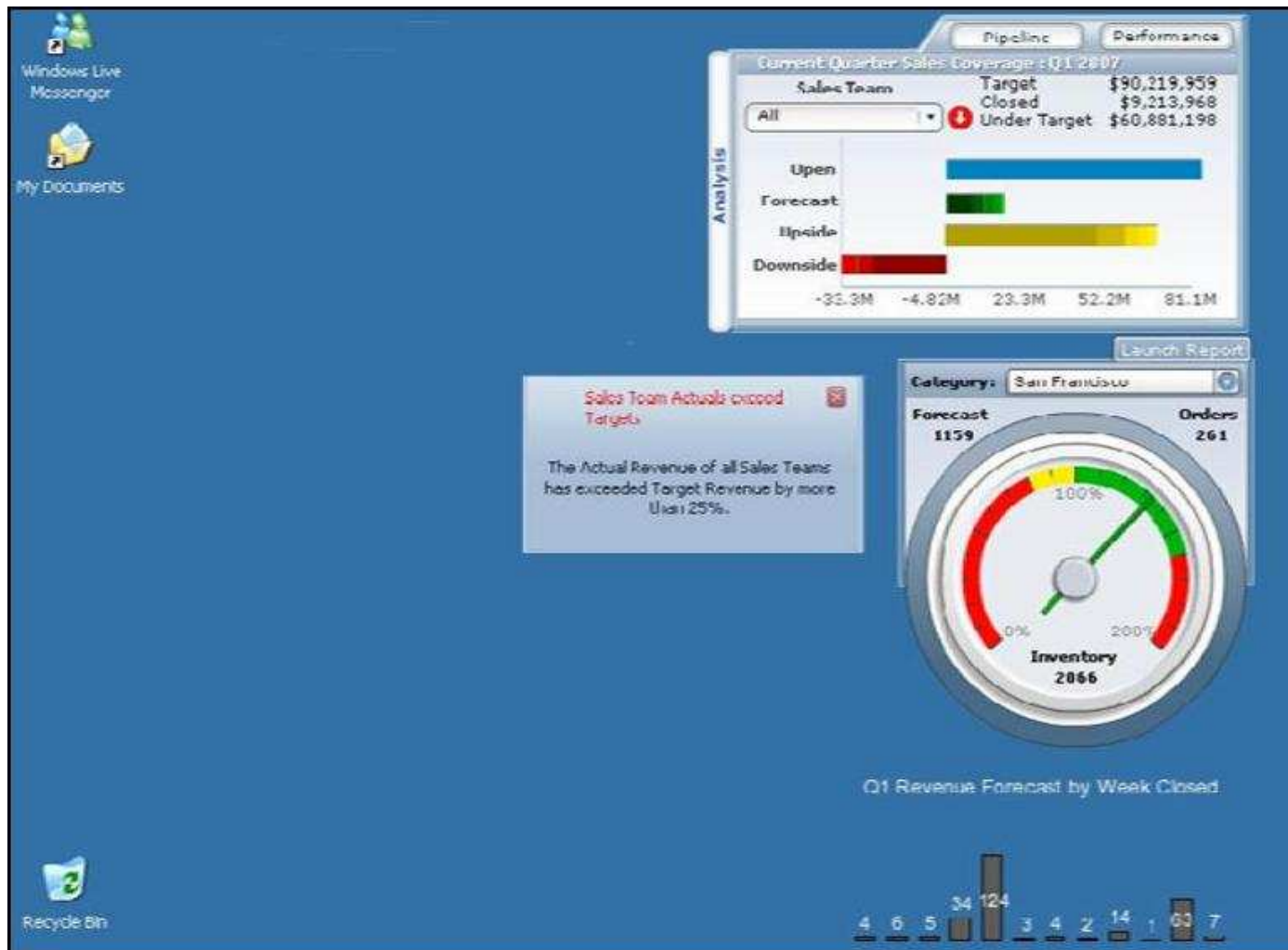


Image source: http://www.jginfo.com/Portals/1/SiteImages/BOBJ_Dashboard1.jpg

On Desktop...



Integration into Enterprise

- Active Directory/Simplified Sign On
- SOA compliant (WS_, SOAP, RESTful)
- Sharepoint 2007/2010 Portal Integration kit
- Java Portal Integration Kit
- Streaming/Embedded reporting

Challenges

- Infrastructure/Support
 - Hardware, installation and configuration
 - Administration and support
- Development Expertise
 - Developer training
 - Tools